

PartVision

Embedded Machine Vision Systems for Reduced Production Costs

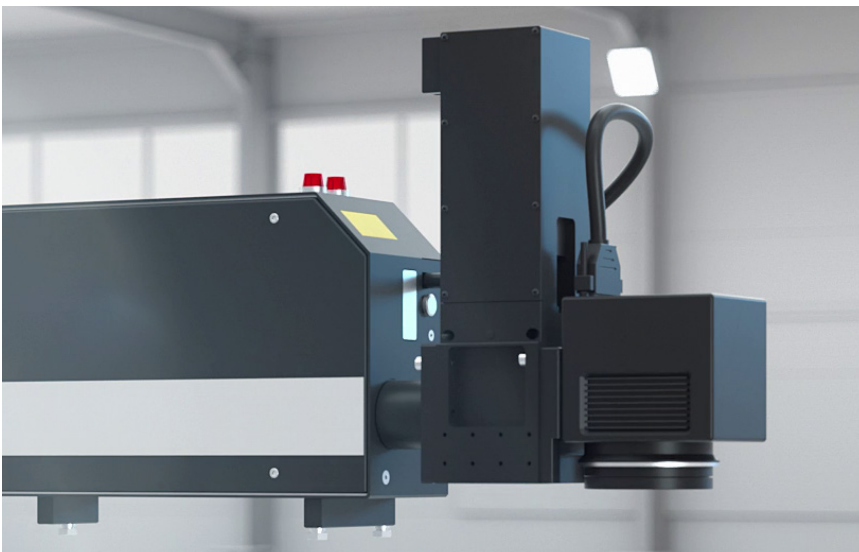
PartVision adds embedded machine vision capabilities that lower production costs and improve processing results for Coherent Exact and PowerLine series products. Specifically, it automatically locates parts and adjusts machine operation as necessary to ensure that laser marks or other features are placed correctly and precisely. This eliminates the need to make specialized fixtures, or switch fixtures during production changeovers. PartVision can also identify which parts have been loaded, and then automatically select the required next process step. Plus, it can acquire post-processing images for content verification, quality control and documentation purposes. And, all these tasks are easily defined and accessed through Coherent Laser FrameWork software.

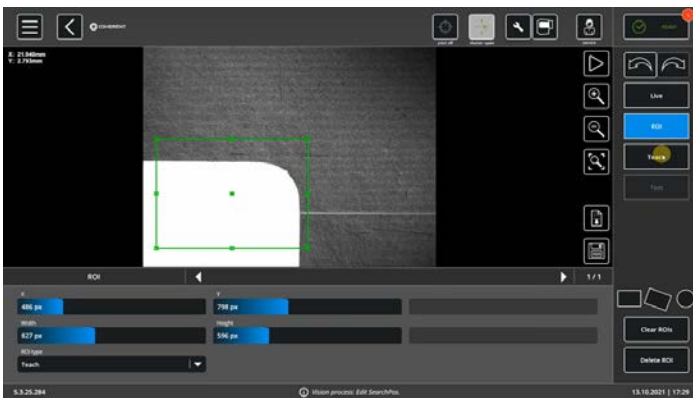
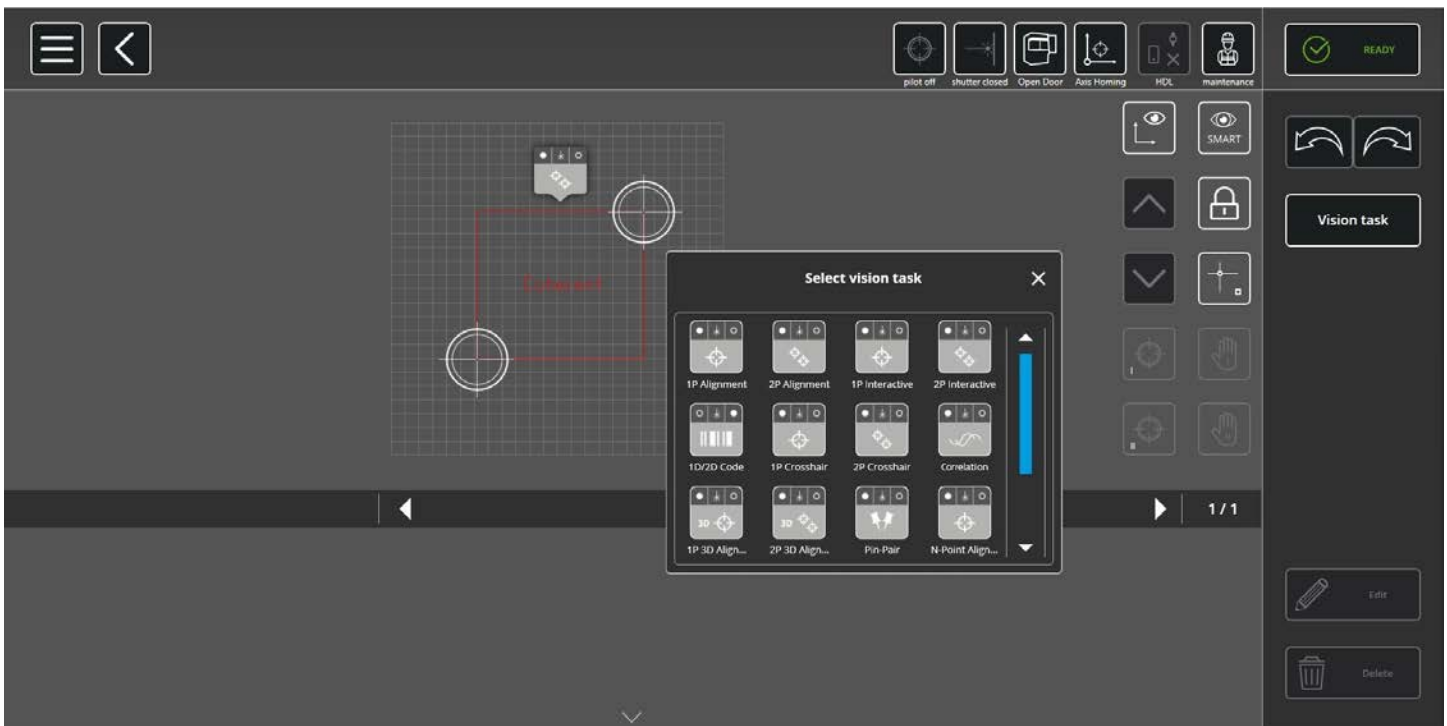
Features and Benefits

- Easy setup and use with Laser FrameWork software
- On-axis system for high accuracy positioning of marks and other processing tasks
- Available for all common wavelengths 1064, 532, and 355 nm
- Multiple lighting configurations options to optimally illuminate any shape or size part
- Supplied with several built-in vision routines, including single- and double-point alignment, including multiple point alignment, code verification, and part validation

Applications

- Marking
- Welding
- Engraving
- Drilling
- Cutting





Easy Workpiece Alignment

Define your vision task for manual or automatic workpiece alignment with just a few mouse clicks in the recipe timeline.

Traceability Made Easy

Incorporate post-processing vision tasks for documentation, traceability, and QC/QA purposes.



Coherent, Inc.,
 5100 Patrick Henry Drive Santa Clara, CA 95054
 p. (800) 527-3786 | (408) 764-4983
 f. (408) 764-4646