

DUAL-STAGE BBO POCKELS CELL

BPC-1030-35-2-01

Using proprietary crystal growth, fabrication, and polishing techniques, Coherent manufactures a comprehensive range of Pockels cells in beta-barium oxide (BBO), potassium dihydrogen phosphate (KDP), and potassium dideuterium phosphate (KD*P) for applications such as materials processing, medical, and aesthetic laser systems.



FEATURES

- High reliability
- High repetition rate
- High average power

APPLICATIONS

- Q-switching of laser cavities
- Coupling light in and out of regenerative amplifiers
- Cavity dumping
- Beam chopper
- Pulse picking

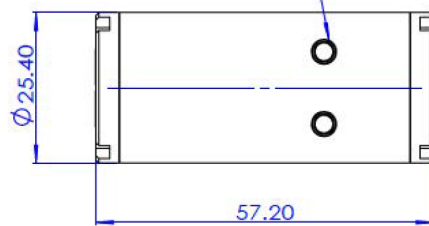
DUAL-STAGE BBO POCKELS CELL

Specifications

Parameter	Unit	Typical	Note
Wavelength	nm	1020-1040	
Material	-	BBO	
Crystal size	mm	4x4x20	
Quantity of crystals	pcs	2	
Clear aperture	mm	3.5	
Transmission	%	>98.3	
Intrinsic contrast ratio (ICR)	-	>1000:1	
Voltage contrast ratio (VCR)	-	>1000:1	
Capacitance (DC)	pF	<6	
$\lambda/4$ voltage	kV	<2.3	at 1030 nm

Dimension (Unit: mm)

Mill Max 0490-0-15-15-07-27-04-0



Ceramic aperture

