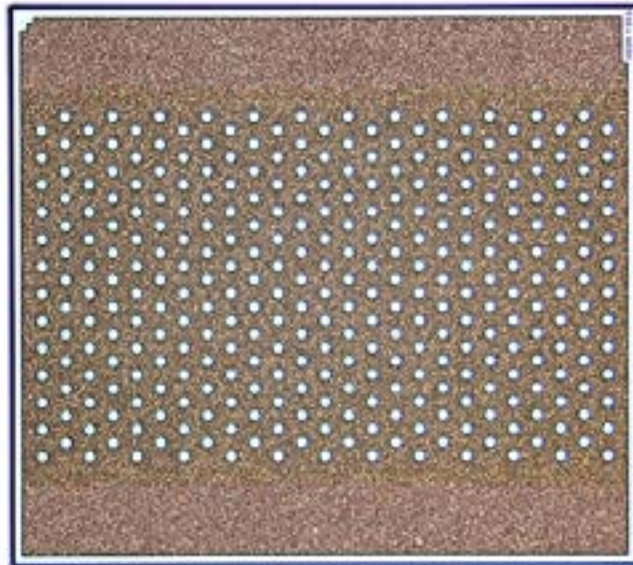


# 940 NM MULTI-MODE DOUBLE-JUNCTION VCSEL ARRAY

## V940-8904-G02

Coherent's multimode high power VCSELs are designed to meet stringent specifications for a broad range of optical 3D sensing applications. This product by stacking vertically two active regions allows to achieve high power at low current (4.6 W at 2.7 A) and up to 110 W in short pulses. The low operating current reduces the impact of inductance on rise time, reduces electromagnetic interference (EMI) and simplifies driver design for short pulses generation.



## FEATURES

- High power conversion efficiency
- High slope efficiency
- High peak power
- Multi transverse mode emission
- Low current operation
- Non-hermetic operation

## APPLICATIONS

- Infrared Illumination
- Short range LIDAR
- 3D camera (Mobile, IoT, Robotics)